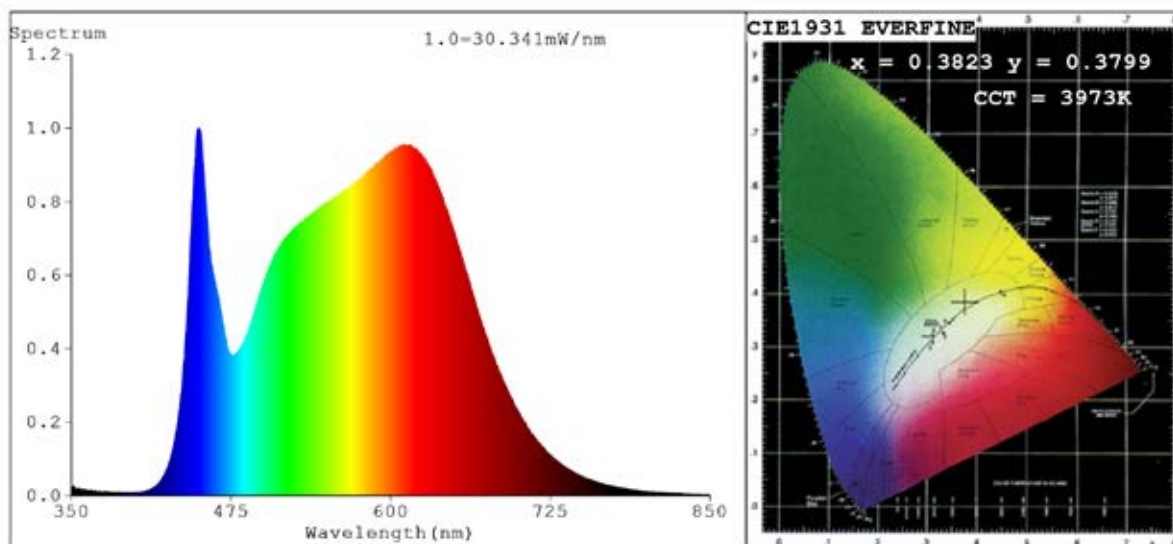


Spectrum Test Report



Color Parameters:

Chromaticity Coordinate: $x=0.3823$ $y=0.3799$ $u'=0.2251$ $v'=0.5033$
 CCT=3973K (Duv=0.0009) Dominant WL:Ld =578.7nm Purity=28.8%
 Ratio:R=19.7% G=76.1% B=4.2%;;Peak WL:Lp=449.5nm FWHM=26.7nm
 Render Index:Ra=92.6 CRI=89.1 AvgR=89.1 TM30:Rf=91 Rg=99
 R1 =93 R2 =95 R3 =97 R4 =93 R5 =92 R6 =93 R7 =94
 R8 =84 R9 =59 R10=88 R11=94 R12=75 R13=94 R14=98 R15=89

Photo Parameters:

Flux = 1756 lm Eff. : 115.84 lm/W Fe = 5.829 W

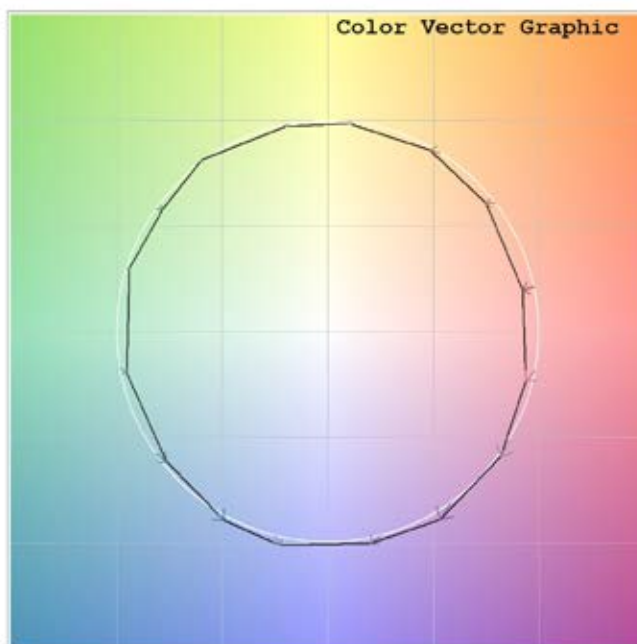
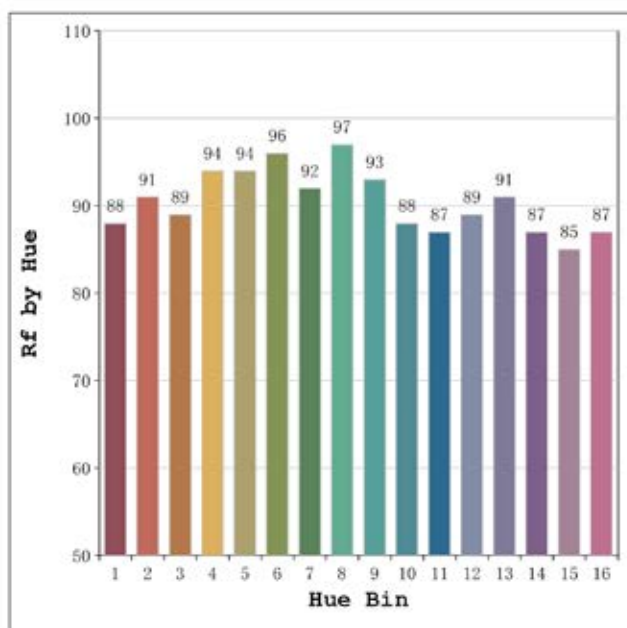
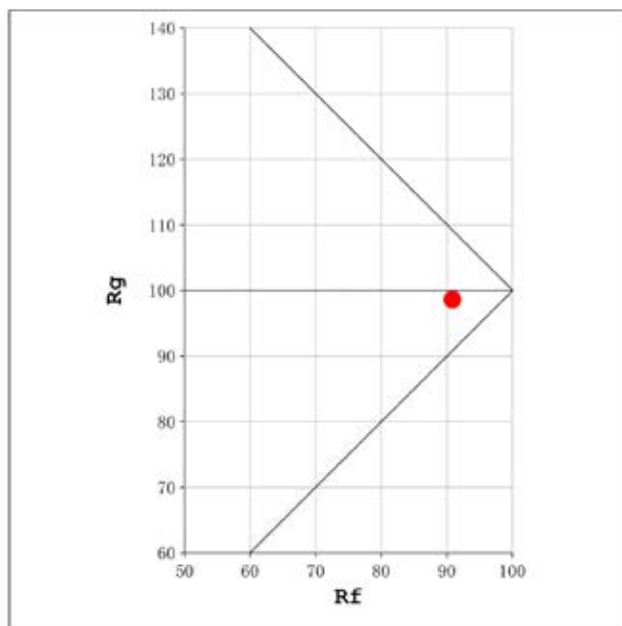
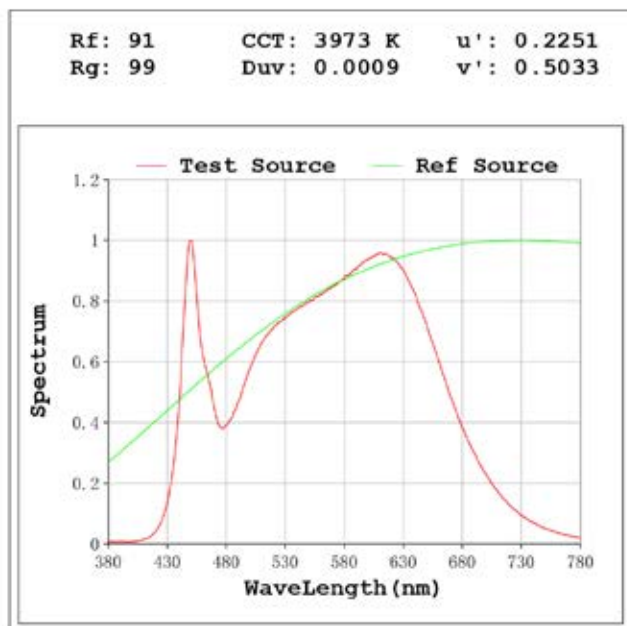
Electrical parameters:

V = 23.998 V I = 0.6316 A P = 15.16 W PF = 1.000

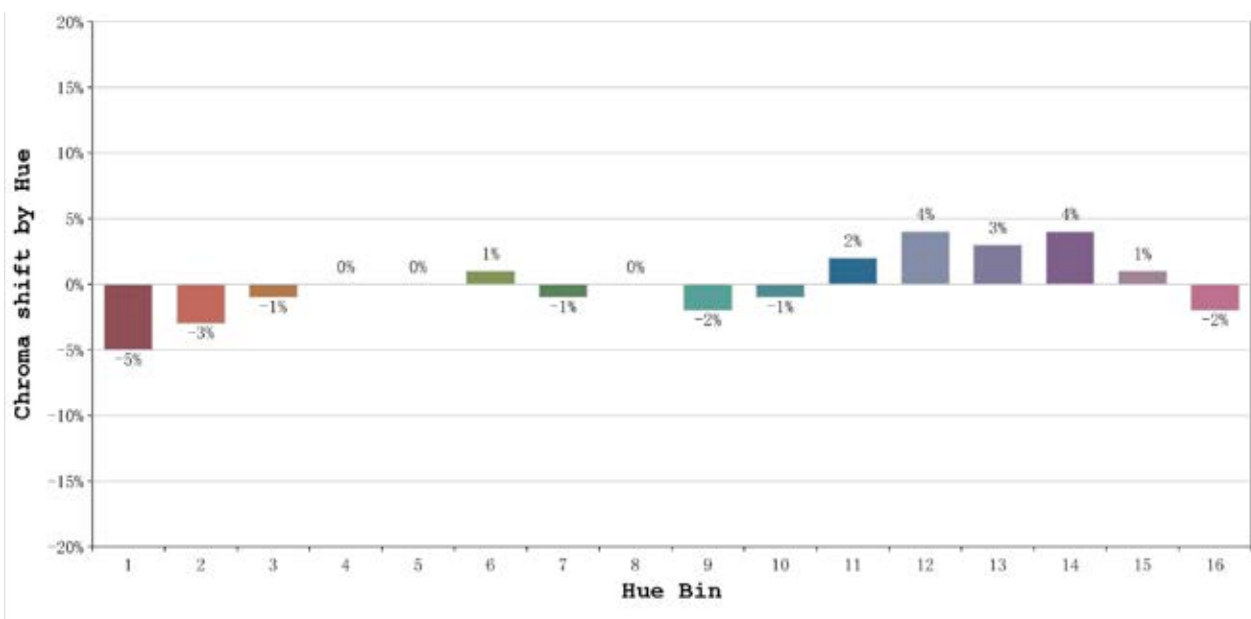
WHITE:ANSI_4000K

Status: Integral T = 878 ms Ip = 50133 (76%)

Model:Ecoled Boxled ultra Slim 35	Number: 33.332
Tester:Sergio Carneros	Date:2025-09-16 13:37:32
Temperature:27Deg	Humidity:40%
Manufacturer:Luz Negra S.L	Remarks:tira flexible de 100cm



Model:Ecoled Boxled ultra Slmim 35Number: 33.332
 Tester:Sergio Carneros Date:2025-09-16 13:37:32
 Temperature:27Deg Humidity:40%
 Manufacturer:Luz Negra S.L Remarks:tira flexible de 100cm



Hue Bin	Hue Angle	Rf	Graphic shift(%)	
			Chroma	Hue
1	0.0° - 22.5°	88	-5	0
2	22.5° - 45.0°	91	-3	2
3	45.0° - 67.5°	89	-1	5
4	67.5° - 90.0°	94	0	2
5	90.0° - 112.5°	94	0	1
6	112.5° - 135.0°	96	1	0
7	135.0° - 157.5°	92	-1	-1
8	157.5° - 180.0°	97	0	0
9	180.0° - 202.5°	93	-2	3
10	202.5° - 225.0°	88	-1	6
11	225.0° - 247.5°	87	2	8
12	247.5° - 270.0°	89	4	3
13	270.0° - 292.5°	91	3	-4
14	292.5° - 315.0°	87	4	-7
15	315.0° - 337.5°	85	1	-8
16	337.5° - 360.0°	87	-2	-5

Model:Ecoled Boxled ultra Slim 35 Number: 33.332
 Tester:Sergio Carneros Date:2025-09-16 13:37:32
 Temperature:27Deg Humidity:40%
 Manufacturer:Luz Negra S.L Remarks:tira flexible de 100cm